

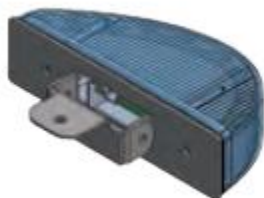
Motor-Bike light DIPA

Motor-Bike LED Grill lights



Technical specifications

- Input voltage: 10-30 V
- Power: 18 W
- Colour: blue
- Operating mode: R65 double flash
- Angle: wide angle (+30° to -90°)
- Regulation: cat. XB2, R10 (Type : DIPA MX150-B)
- Dimensions without fixing (l x w x h): 150 x 61 x 40 mm
- Dimensions with fixing (l x w x h): 150 x 120 x 40 mm
- Weight: 300 g
- Operating temperature: -40°C to +85°C
- Enclosure rating IP: IP65
- Synchronizing: yes



Name	Code	UP / € EX VAT
Motor-Bike light DIPA (the pair)	31117	CU